



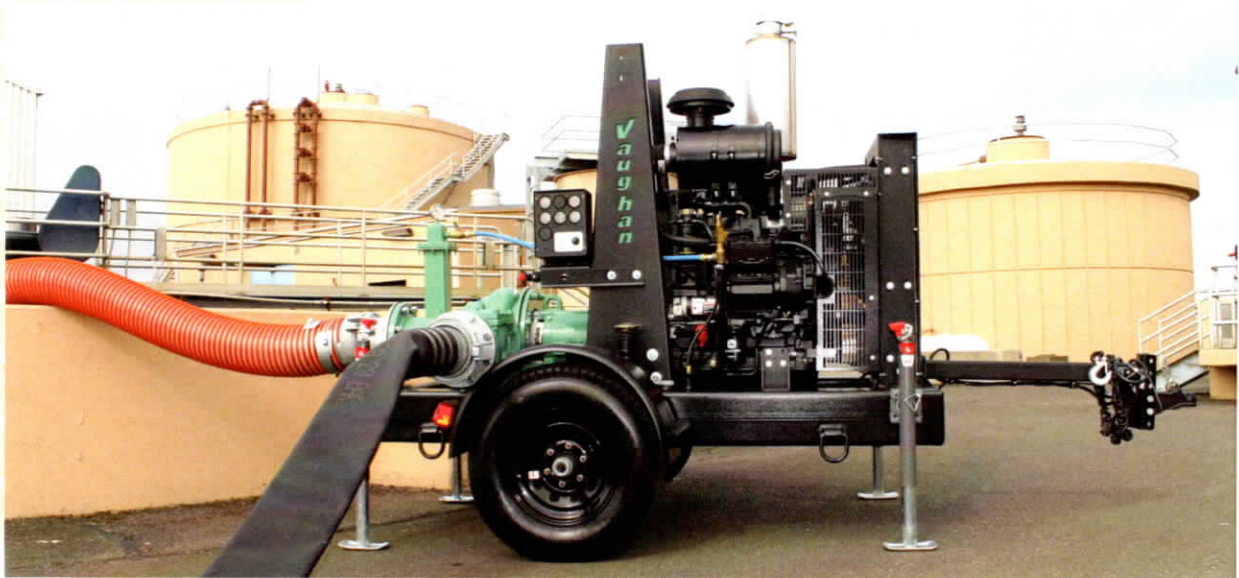
RELIABLE FLOW ON THE GO.



VAUGHAN PORTABLE BYPASS TRAILER



VAUGHAN PORTABLE BYPASS TRAILER



Vaughan's Portable Pump Line units are heavy duty solutions that provide unmatched reliability, anywhere. Available with Vaughan's signature Chopper Pump and Triton Screw Pump, these units can be used for tough solids reduction applications or low shear solids handling. Powered by diesel or electric drive motors, these portable pump units are ready for the toughest jobs in any location. **Contact us to get moving today.**

MUNICIPAL APPLICATIONS

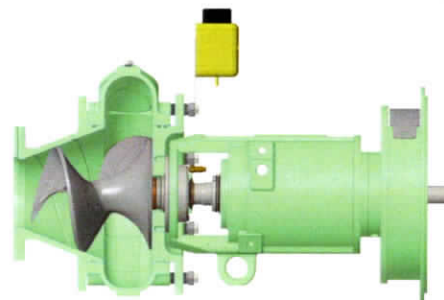
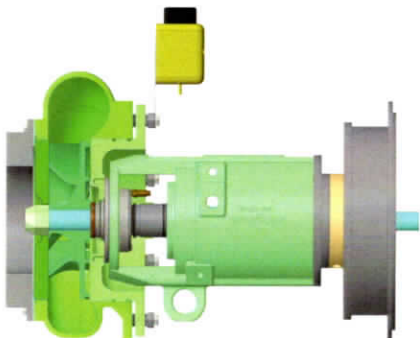
If you find your municipal facility needs a tough solution for bypass pumping, look no further than Vaughan. Some applications include but are not limited to:

- Lift Stations - Bypass Pumping
- Digester Clean-out
- Storm Water
- Emergency Water Mitigation
- Sludge Transfer
- And Much More

INDUSTRIAL MARKETS

With numerous set-up options and multiple pump choices, the Portable Bypass Trailer is ready to perform in any application. Including, but not limited to:

- | | |
|--------------------------------|-------------------------|
| • Chemical / Petrochemical | • Paper & Wood Products |
| • Institutional & Correctional | • Energy |
| • Mining / Sand & Gravel | • Agriculture |
| | • Food Processing |
| | • Contractor Services |



PUMP OPTIONS AND FEATURES

- Dry Prime Horizontal End Suction Chopper Pumps in 3"-12" models
- Dry Prime Horizontal End-Suction Triton Screw Pumps in 3"-12" models
- Wet Prime Self Priming Chopper Pumps in 4"-10" models

CHOPPER PUMP

- Flows over 10,000 gallons per minute
- Hydraulic efficiencies OVER 70%
- Heavy-duty power frames
- Vaughan's Flushless Cartridge Mechanical Seal
- Heat-treated and hardened components
- Non-clogging guarantee on all chopper pumps
- Externally Adjustable Cutter Clearances

TRITON® PUMP

- Flows up to 10,000 gallons per minute
- Low Shear - Gentle Pumping Action
- High efficient, non-clogging performance
- Vaughan's Flushless Cartridge Mechanical Seal
- Low NPSHr with steep performance curves
- Same heavy-duty power frame as the Chopper
- Back Pullout Casing for Ease of Maintenance
- Back Cutter to Protect Mechanical Seal

TRAILER

- Heavy-duty, powder coated fabricated steel frame with lifting bale
- Torsion Flex axles
- Integral HDPE fuel cells
- Electric brakes with DOT lighting package
- LOFA CP750 auto start control panel standard
- Vacuum pump or Compressor priming systems
- Open and enclosed configurations available

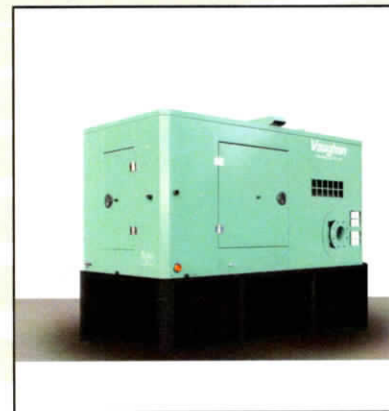
TRAILER CONFIGURATIONS



OPEN

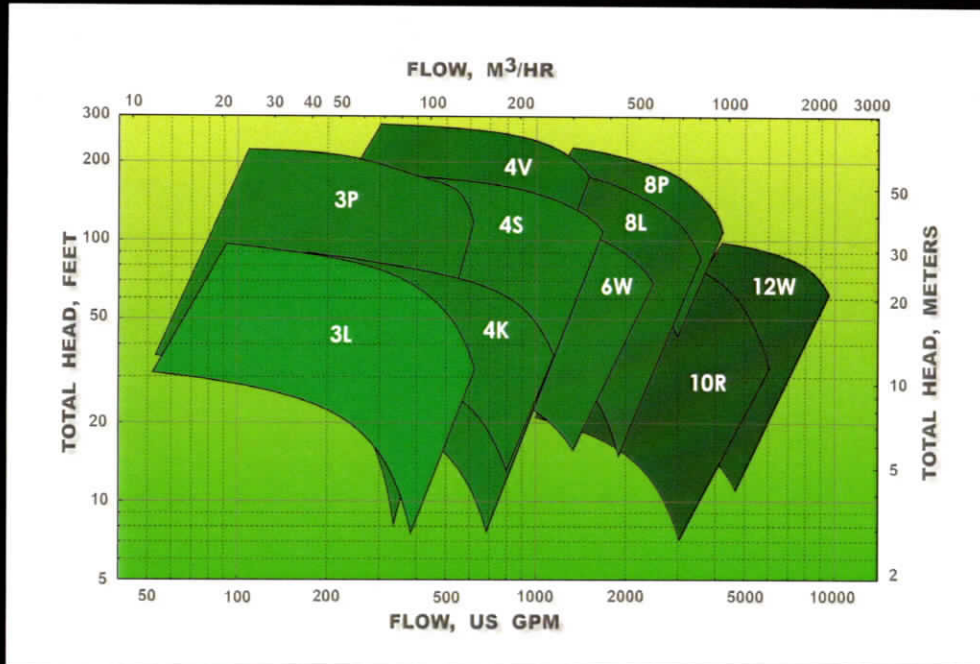


**ENCLOSED
"SOUND ATTENUATED"**

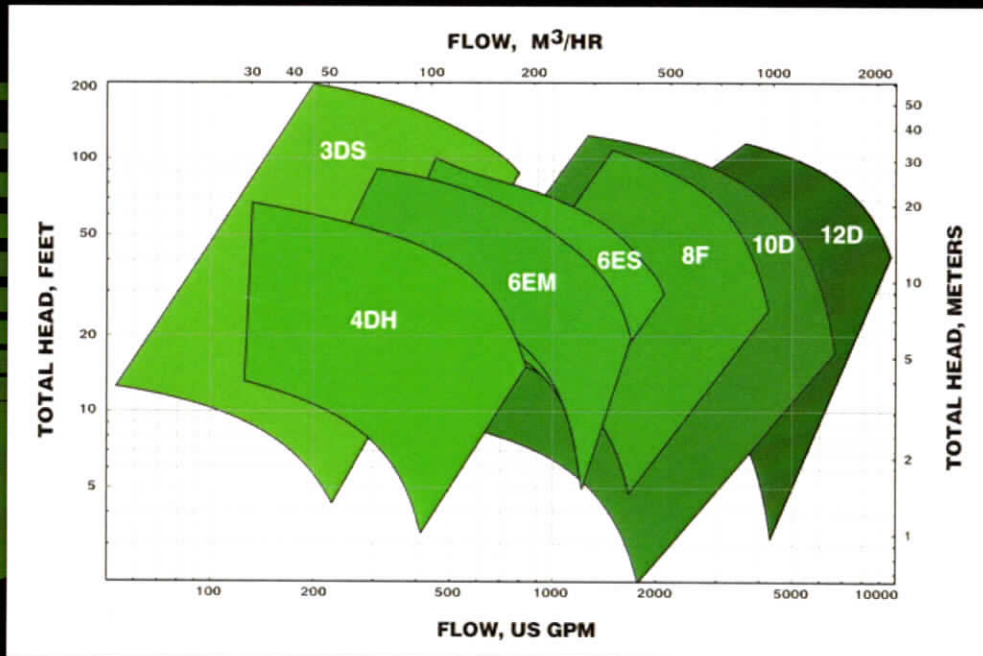


SKID MOUNT

CHOPPER PUMP PERFORMANCE MAP



TRITON PUMP PERFORMANCE MAP



P. 888-249-CHOP
E. info@chopperpumps.com

ChopperPumps.com