



# WASTECORP. Pumps®



## 2022 TRASH FLOW® DRY PRIME PUMP BROCHURE

# Wastecorp Trash Flow® Dry Prime Pumps

## HIGH PERFORMANCE DRY PRIME PUMPS

Wastecorp Pumps is an ISO 9001/14001 certified dry prime pump manufacturer. Our dry prime pump products are available for municipal or industrial applications in 4", 6", 8" and 12" connection sizes with fluid handling capabilities up to 12,000 GPM. We offer standard head and high discharge head models ranging from 130 ft - 720 ft. Wastecorp uses final tier 4 engines for optimal job site efficiency and reduced emissions.

## DRY PRIME PUMP CONFIGURATIONS

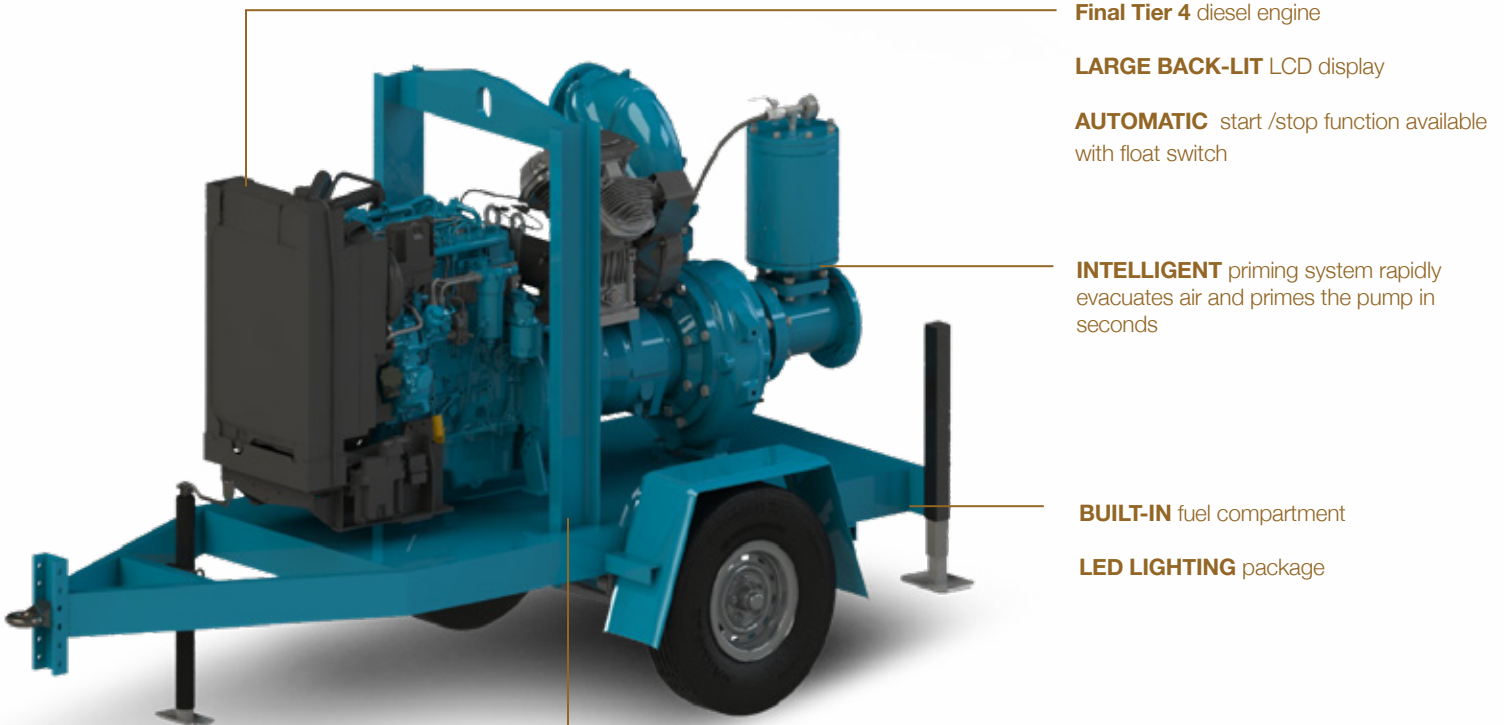
With Trash Flow dry prime pumps you can select from DOT compliant trailer mounted models with electric brakes and LED lighting packages, to utility trailers, skid mounted or sound attenuated enclosures for sound-sensitive areas.

## PUMP TECHNOLOGY

Wastecorp's intelligent priming system, uses a Quincy compressor to rapidly evacuate air from the suction line which is exhausted to atmosphere. Liquid replaces the air, automatically priming the pump within seconds. The result is a fast, efficient and environmentally friendly pump system.

## APPLICATIONS

- Municipal wastewater pumping projects
- Road work pump applications
- General construction dry prime pumps
- High head mining pumps
- Excavation Projects
- Sewer bypass pumps



**Final Tier 4** diesel engine

**LARGE BACK-LIT** LCD display

**AUTOMATIC** start /stop function available with float switch

**INTELLIGENT** priming system rapidly evacuates air and primes the pump in seconds

**BUILT-IN** fuel compartment

**LED LIGHTING** package

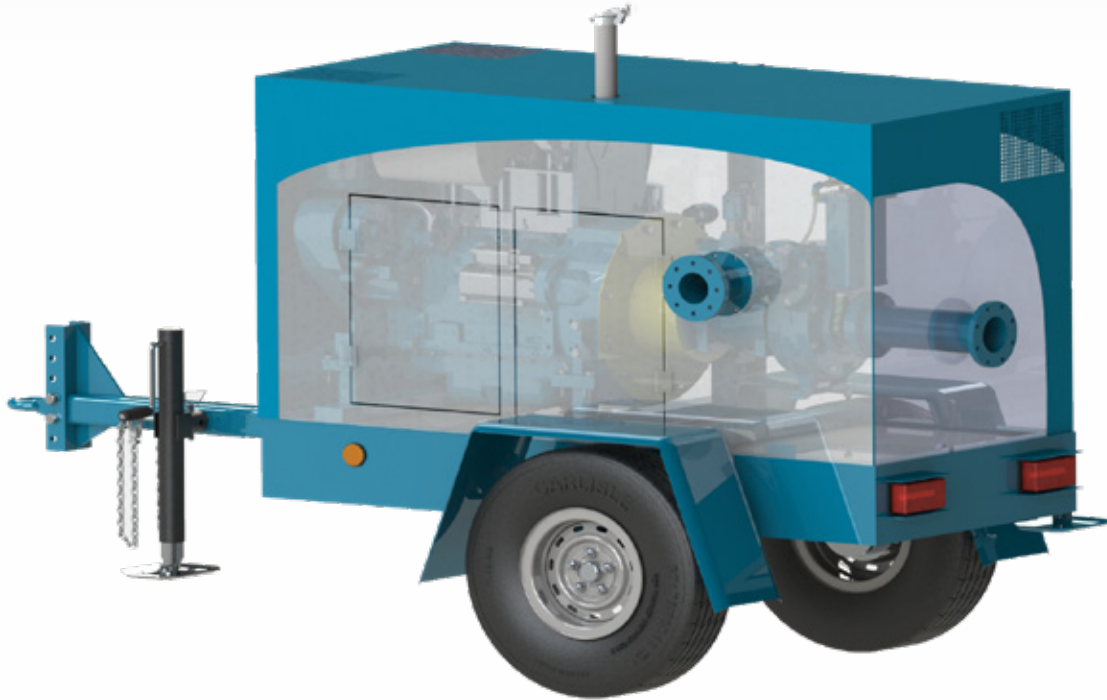
## JOBSITE MOBILITY

Standard lifting bail for easy movement around your job site

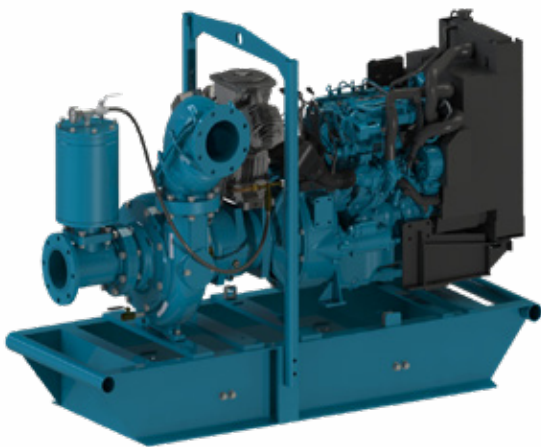
Optional tamper proof enclosure for added protection

## Optional Configurations

### SOUND ATTENUATED ENCLOSURE

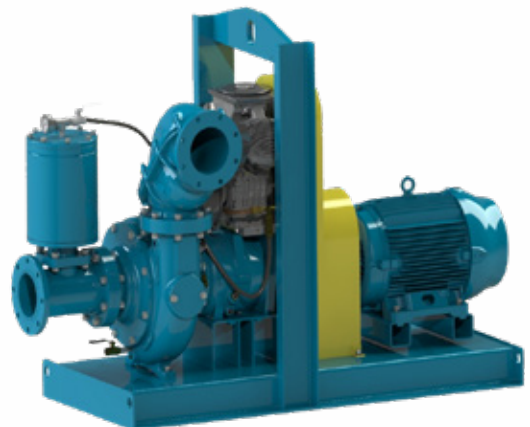


### SKID MOUNTED DRY PRIME PUMPS



Skid mounted Trash Flow dry prime pumps are designed to be moved around the job site with a forklift or via lifting bail. The frame can be configured with forklift pockets on either the front, back or sides of the pump for enhanced mobility.

### ELECTRIC DRY PRIME PUMPS



All Trash Flow Dry Prime pumps are available with electric motors for both temporary and permanent installation. Electric powered dry prime pumps do not require refueling and reduce the carbon footprint of your project

## Trash Flow® TFV-C Lighter Duty Series

Wastecorp's Trash Flow TFV-C Series dry prime pumps are designed with lighter duty engines to adapt to job sites that don't require higher flow rates or engine HP's. Designed with Cummins diesel engines (or equal) you'll get an economical dry prime pump with Lofa control panels and several available optional accessories.



**Trash Flow TFV-C-4**

Connection size	4"
Max. capacity (US GPM)	1200 GPM
Max. head	132 ft
Max. solids (in)	3"
Max. engine rating	48 hp



**Trash Flow TFV-C-6**

Connection size	6"
Max. capacity (US GPM)	1300 GPM
Max. head	138 ft
Max. solids (in)	3"
Max. engine rating	74 hp



All Trash Flow dry prime pump models are available with optional accessories and configurations like lockable storage, spare tires, upgrades controls, Deutz, John Deere, CAT and Cummins engines, work lights and more.

# Trash Flow® TFV-4 Series Professional Dry Prime Pumps 4" Connection



**Trash Flow TFV-4-4LE2T-M**

Connection size	4"
Max. capacity (US GPM)	1200 GPM
Max. head	132 ft
Max. solids (in)	3"
Max. engine rating	48 hp



**Trash Flow TFV-4-4LE2TX-M**

Connection size	4"
Max. capacity (US GPM)	1300 GPM
Max. head	138 ft
Max. solids (in)	3"
Max. engine rating	62 hp



**Trash Flow TFV-4-C2.2T-M**

Connection size	4"
Max. capacity (US GPM)	1400 GPM
Max. head	140 ft
Max. solids (in)	3"
Max. engine rating	67 hp



**Trash Flow TFV-4-TD2-9T4F**

Connection size	4"
Max. capacity (US GPM)	1600 GPM
Max. head	150 ft
Max. solids (in)	3"
Max. engine rating	74 hp

## Trash Flow® Dry Prime 4" Connection - HIGH HEAD



**Trash Flow TFVH-6x4-C4.4**

Suction Connection	6"
Discharge Connection	4"
Max. capacity (US GPM)	3000 GPM
Max. head	490 ft
Max. solids (in)	3"
Max. engine rating	174 hp

\*Models above may contain optional accessories. Contact factory for details.

## Trash Flow® Dry Prime 6” Connection



**Trash Flow TFV-6-4LE2T-M**

Connection size	6”
Max. capacity (US GPM)	2450 GPM
Max. head	110 ft
Max. solids (in)	3”
Max. engine rating	48 hp



**Trash Flow TFV-6-4LE2TX-M**

Connection size	6”
Max. capacity (US GPM)	2600 GPM
Max. head	190 ft
Max. solids (in)	3”
Max. engine rating	62 hp



**Trash Flow TFV-6-TD3.6L4-M**

Connection size	6”
Max. capacity (US GPM)	2800 GPM
Max. head	200 ft
Max. solids (in)	3”
Max. engine rating	74 hp



**Trash Flow TFV-6-C3.4T-M**

Connection size	6”
Max. capacity (US GPM)	2800 GPM
Max. head	200 ft
Max. solids (in)	3”
Max. engine rating	74 hp

## Trash Flow® Dry Prime 6” Connection - HIGH HEAD



**Trash Flow TFVH-8x6-C7**

Connection size	6”
Max. capacity (US GPM)	5400 GPM
Max. head	450 ft
Max. solids (in)	3”
Max. engine rating	450 hp

## Trash Flow® Dry Prime 8” Connection



**Trash Flow TFV-8-TD3.664-M**

Connection size	8”
Max. capacity (US GPM)	4500 GPM
Max. head	200 ft
Max. solids (in)	3”
Max. engine rating	74 hp



**Trash Flow TFV-8-C3.4T-M**

Connection size	8”
Max. capacity (US GPM)	4500 GPM
Max. head	200 ft
Max. solids (in)	3”
Max. engine rating	74 hp



### THE PUMP MAKES ALL THE DIFFERENCE

Trash Flow dry prime pumps features a run-dry system for continuous operations without the need for priming the pump with water. The Quincy compressor rapidly removes air from the suction line and makes priming the pump simple and easy.

## Trash Flow® Dry Prime 8” Connection - HIGH HEAD



**Trash Flow TFBH-10X8-C13**

Suction Connection	10”
Discharge Connection	8”
Max. capacity (US GPM)	6500 GPM
Max. head	450 ft
Max. solids (in)	3.5”
Max. engine rating	520 hp

## Trash Flow® Dry Prime 12” Connection



**Trash Flow TFV-12-C9.3T-M**

Connection size	12"
Max. capacity (US GPM)	9500 GPM
Max. head	300 ft
Max. solids (in)	3.7"
Max. engine rating	400 hp



**Trash Flow TFV-12-TCD7.8L04-M**

Connection size	12"
Max. capacity (US GPM)	9500 GPM
Max. head	300 ft
Max. solids (in)	3.7"
Max. engine rating	400 hp

## Trash Flow® Dry Prime 12” Connection - HIGH HEAD



**Trash Flow TFVH-12x8-C32**

Suction Connection	12"
Discharge Connection	8"
Max. capacity (US GPM)	12000 GPM
Max. head	720 ft
Max. solids (in)	3"
Max. engine rating	1200 hp



## Trash Flow® Husher - Sound Attenuated Enclosure

All Wastecorp Trash Flow wet prime and dry prime pumps are available with an optional sound attenuated enclosure. The enclosure help to reduce noise and meet local noise level regulations. The lockable access door also deter vandals and help to prevent theft.



- Meets local noise regulations
- DOT compliant trailers
- Custom door location available

- LED lighting standard
- Lifting bail available
- Skid mounted or trailer mounted

## Sample Dry Prime Pump Installations



TFV-4 at a Detroit, Michigan public utilities dept. This TFV 4 serve the City of Detroit and surrounding communities. The DOT compliant system cleans out storm sewers, flooded areas and wastewater. Optional equipment includes a CAT diesel engine, LED work lights and enhanced control panel. Wastecorp conducted on site field training for all operators for the proper use and storage of their dry prime pump.



TFV 6x4 dri prime pump with a 6" suction and 4" discharge at a Maine wastewater treatment plant. The facility uses their Trash Flow as a bypass pump during an extensive upgrade at the plant. Includes a Deutz diesel engine, float switches, strainers, pro series hoses. Wastecorp conducted on site field training for all operators.



Trash Flow TFV-6 Husher series silent pump. The New York City Department of Environmental Protection required a dry prime pump with sound attenuated enclosure to pump on Brooklyn residential streets. The enclosure helps keep noise levels down. Options include lockable doors to prevent vandals and theft, DOT compliant trailer package with electric brakes.



Trash Flow TFV-6 at a Miami, Florida food processing facility. The Trash Flow dry prime pumps help to prevent overflowing lagoons and storm sewers during the rainy season and during storms. Options include DOT compliant trailer packages with LOFA control panels and 50' of suction/discharge hose.

North America: 1-888-829-2783

Fax: 1-888-883-3320

Worldwide: +1-201-445-2882

Fax: +1-201-445-3252

E-mail: [info@wastecorp.com](mailto:info@wastecorp.com)

Internet: [www.wastecorp.com](http://www.wastecorp.com)



# WASTECORP. Pumps<sup>®</sup>

Specifications, literature and illustrative material in this trash pump brochure are accurate at the time of publication but are subject to change without notice. Illustrations may include optional equipment and accessories and may not include all standard equipment. Wastecorp and globes are trademarks of WPI/Wastecorp Pumps. Wastecorp Pumps is the exclusive manufacturer of these brands worldwide under license. Marks are protected in North America and worldwide. Wastecorp is a competitor to Godwin dry prime pumps, Thompson pump, Vaughn Chopper pumps.

© 2022 WPCI. All rights reserved. New York, NY 10024.  
NYC/West85 Rev Djs 03/22. Litho in the United States of America.  
For a complete engineering specification contact Wastecorp Pumps at 1.888.829.2783 or by E-mail: [info@wastecorp.com](mailto:info@wastecorp.com).

Also on the web at <http://www.wastecorp.com> Wastecorp is not affiliated with the companies listed above. Names used for reference purposes only. All trademarks are the property of their respective owners.