



Smith & Loveless Inc.
Protecting Water. Protecting People.™

CAPSULAR®

Underground Pump Stations



A Wise Investment for Large Flow Underground Pumping

Large Flow Underground Pump Station Designed for Continuous Human Occupancy



The **CAPSULAR**® Underground Pump Station provides an operator-friendly and economical solution for large-flow pumping (with multiple S&L Non-Clog Pumps pumps up to 20,000 GPM / 1,262 Ips) when compared with more expensive concrete, built-in-place stations. With exclusive Safe-Stair entryway module and integrated HVAC, the pump station design meets the OSHA definition of “designed for continuous human occupancy” and therefore does not require classification as *confined space entry*.

The **CAPSULAR**® features simplified-yet-powerful S&L **QUICKSMART**™ Touchscreen Controls and a spacious interior offering a variety of user-options including shelving, workdesks, sinks and storage. The station is pre-engineered and fabricated in the S&L factory, allowing for simple installation and future flow capacity increases via adaptation of additional pumps or larger rotating assemblies.

FEATURES:

1 Factory Built Safe-Stair Entry Module

provides safe and easy access to the station with a stairway similar to those found in most public buildings, reducing operator hazards

2 Spacious Interiors w/ Integrated HVAC

enables continuous human occupancy to safely inspect equipment with a minimum of 30 air changes per hour (no confined space entry)

3 Maintenance Lift and Traveling Beam

simplifies removal and/or addition of pumps via traveling beam hoist system for routine maintenance and/or capacity increases

4 PLC Controls & Options

*features advanced **QUICKSMART**™ Touchscreen Controls (at grade or inside the station) for the best operator experience*



Design Data & Options

Flow Rate:

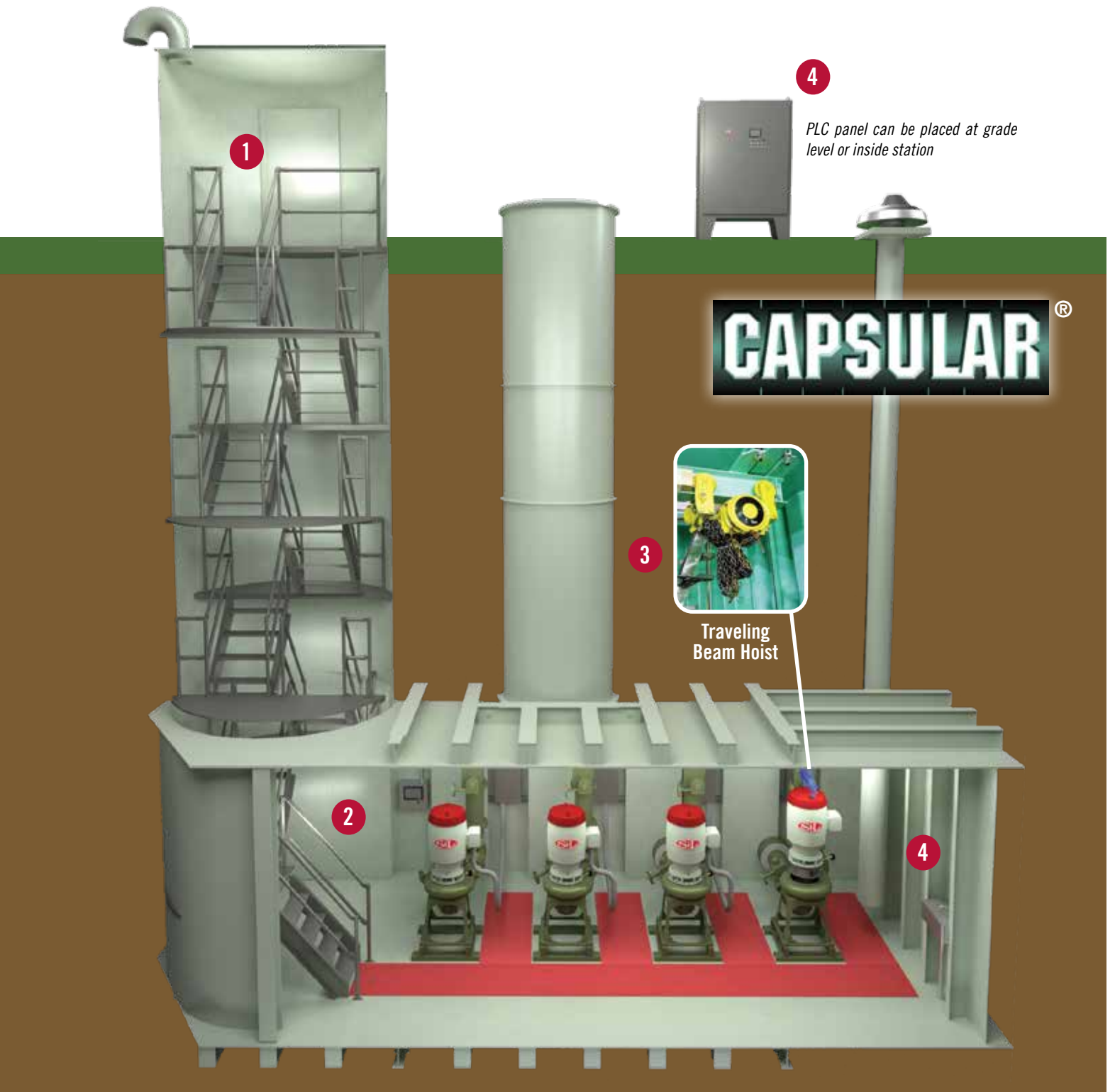
- 75 gpm - 20,000 gpm (28.8 mgd)
- 5 Ips - 1,280 Ips

Head Conditions:

- Single Stage: 370 ft. / 113 m
- Multiple Stages: 500 ft. / 152 m

Options:

- Pump Sizes: 4" - 12" / 100 mm - 300 mm
- Three or more S&L Pumps per station / **I-SERIES**™ Immersible Pumps available
- Safe-Stair Entry & Maintenance Lifts
- Soft Starts and Variable Frequency Drives (VFDs)
- **QUICKSMART**™ Programmable Logic Controls
- Multiple Shell Configurations with Built-In Desks, Shelves and Sinks



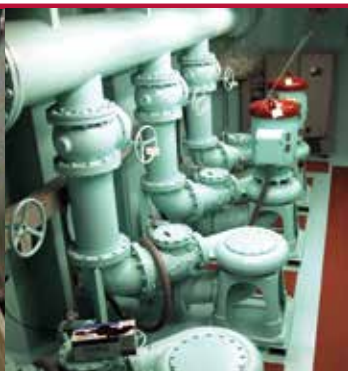
Interior HVAC



Building / Enclosures



Water Basins / Drains



Design for Future



CAPSULAR[®]

Underground Pump Stations

Highest Efficiency

Safest O&M

Most Reliable

Lowest Total Costs

QUICK SMART[™] System Controls

Delivering simplified operation yet powerful pump station control, **QUICKSMART[™]** PLC Station Controls provide unparalleled ability to monitor and adjust all of your pump station functions. The user-friendly, graphical touchscreen makes control modifications, screen navigation and viewing of pump station status easier and smarter than ever. Features include a push-notification maintenance log and I/O Status (digital and analog).



Smith & Loveless Inc.
www.SmithandLoveless.com

Phone: (913) 888-5201
Fax: (913) 888-2173

14040 Santa Fe Trail Dr.,
Lenexa, KS USA 66215-1284