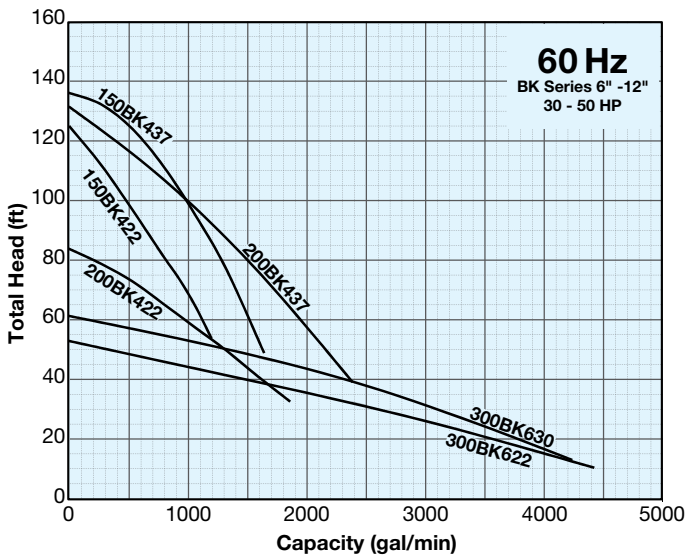


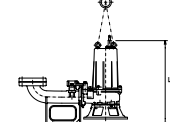
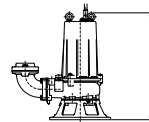
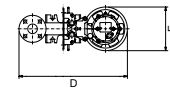
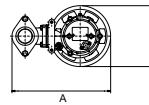
BK SERIES | Non-Clog Submersible Pump • Jacketed

The BK Series features with a standard built in internal cooling jacket design. The BK series offers continued cooling when low sump level may be present. Solids handling non-clog submersible pump featuring a standard cooling jacket for operating at low water levels without overheating. 30HP - 50HP, three phase. 6"-12" discharge sizes.



Dimension: Free Standing A / B / C

Dimension: Guide Rail Fitting (TO / TOS) D / E / F



| Three Phase Model | Motor Output (HP) | Rated Current (A) | | *S.S. (RPM) | Discharge Size (in.) | Dimensions (in.) | | | | | | Max. Solids Dia. (in.) |
|-------------------|-------------------|-------------------|------|-------------|----------------------|----------------------|----------|----------|----------------------------|---------|----------|------------------------|
| | | 460V | 575V | | | Free Standing Models | | | TOS & TO Guide Rail Models | | | |
| | | | | | | A | B | C | D | E | F | |
| 150BK422 | 30 | 39 | 31.5 | 1800 | 6 | 38 7/8 | 21 1/4 | 52 1/8 | 46 1/4 | 20 1/2 | 51 5/16 | 2.95 |
| 200BK422 | 30 | 39 | 31.5 | 1800 | 8 | 42 13/16 | 24 7/16 | 51 15/16 | 53 3/8 | 21 5/8 | 51 15/16 | 2.95 |
| 300BK622 | 30 | 41 | 33 | 1200 | 12 | 53 3/4 | 29 15/16 | 63 9/16 | 66 5/16 | 27 3/8 | 63 11/16 | 3.27 |
| 300BK630 | 40 | 56 | 45 | 1200 | 12 | 53 3/4 | 29 15/16 | 67 3/16 | 66 5/16 | 27 3/8 | 67 5/16 | 2.76 |
| 150BK437 | 50 | 63 | 50 | 1800 | 6 | 42 11/16 | 28 1/2 | 63 11/16 | 51 7/16 | 24 7/16 | 57 1/16 | 1.57 |
| 200BK437 | 50 | 63 | 50 | 1800 | 8 | 46 7/8 | 28 1/2 | 64 9/16 | 56 1/4 | 24 3/8 | 60 1/8 | 1.57 |

* Synchronous Speed